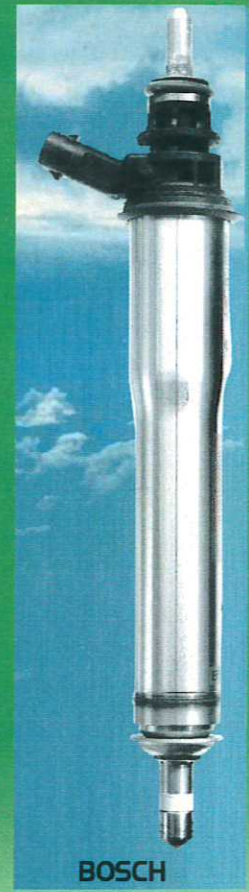


# PIEZO

PETROL/GASOLINE



# PIEZO GDI ADAPTER BOX

# ASNU PIEZO

## Diagnosing Injector Performance

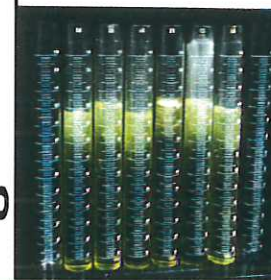
Piezo injector is the current system of choice of major executive vehicle manufacturers. Piezo injectors can respond so quickly that they can allow the vehicle to run at incredible air/fuel ratios of up to 60:1 in some engines. Compared to standard vehicles running at 14:1 air/fuel ratios, this means the minimum amount of fuel is used and the exhaust emissions are virtually non-existent, while still maintaining excellent drivability and performance. As you can imagine, the performance of these injections is critical, maintenance should not be an option, it should be mandatory.

*How often do you check your Piezo injectors?*

Piezo injections offer performance, driveability, economy and the ultimate in exhaust emissions.



How do  
you  
test your  
Piezo injectors?



## Special Features

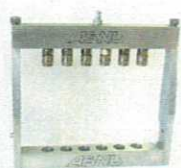
In conjunction with a world leading vehicle manufacturer, ASNU have created this purpose built adapter box.

- ◆ Easy to use test functions using the latest Piezo technology
- ◆ Easy connections to Classic GDi Machine or GDi adapter Box.
- ◆ Universal fittings for Piezo type injectors
- ◆ Dimensions: 300mm x 190mm x 220mm in a robust metal casing.

## Equipment Included in Piezo Adapter Box



Bosch Fuel Rail



Siemens Fuel Rail



Injector Harness



Bosch Coupling (QTY 6)



Siemens Coupling (QTY 6)



Connection Harness

**ACE**   
Fuel Systems



Parts and Customer  
Service:  
1-620-429-1000  
1-800-325-3888  
Sales@ace-fuelsystems.com  
www.ace-fuelsystems.com

